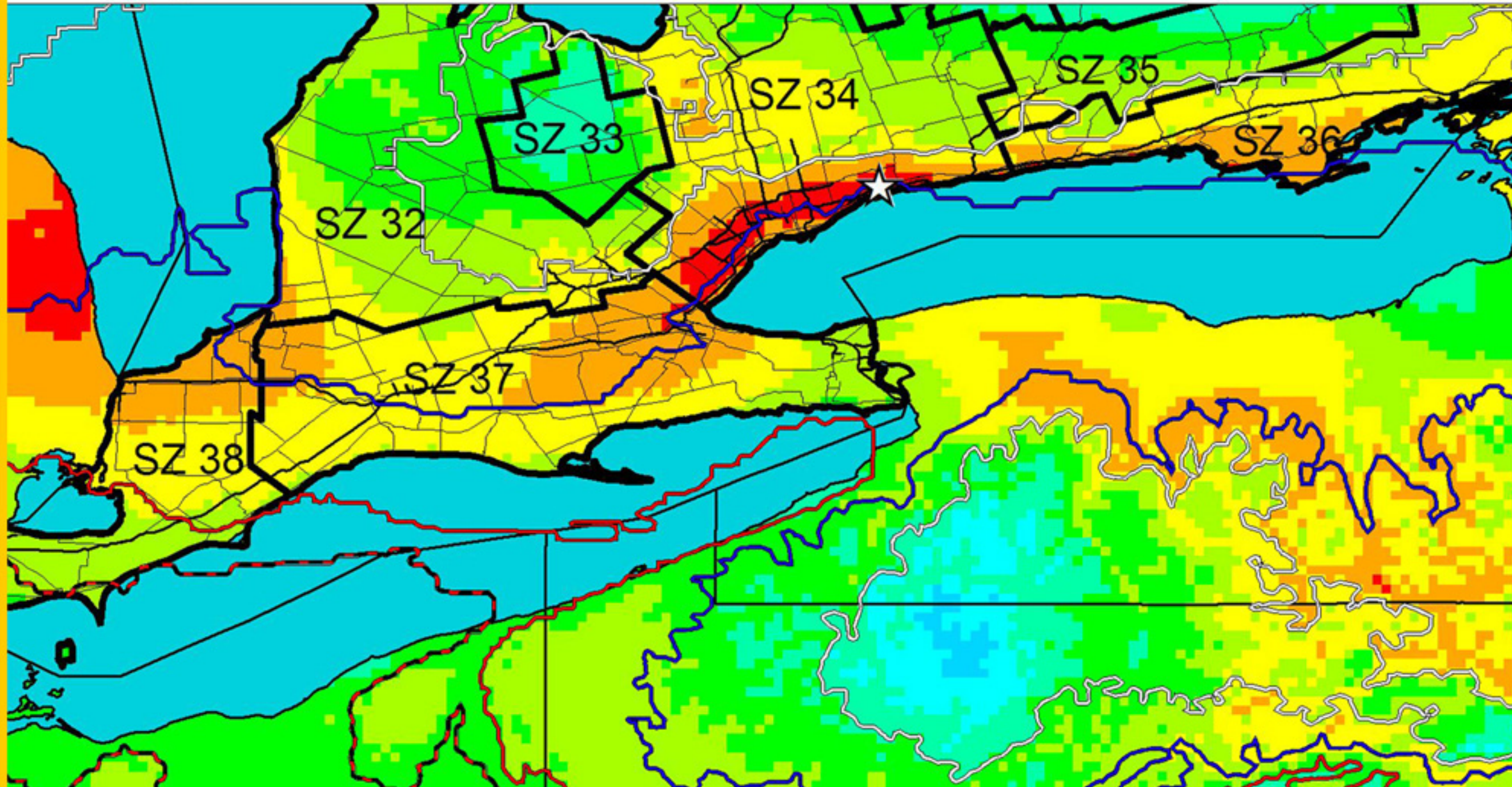


Going Beyond Seed Zones* - SeedWhere Climate ** Analysis for Sourcing Adapted Seed & Stock

Contact the Forest Gene Conservation Association fgcaontario@gmail.com www.fgca.net

The Climate of Ajax ☆ (in SZ 34)
 - Growing Season Length (GSL ***),
 winter & summer temperatures and precipitation
 - compared to S Ontario and N USA.

Ajax's current climate is most similar to the red and then orange areas. Re climate change, also consider sources from the yellow & green areas in zones 37 & 38 below the blue line. One climate change projection shows that Ajax's GSL will be 238 days in 2040 ; which is currently to be found on the hatched line in SZ 38.



Area	GSL in days current	Temp - deg C CC	min	max
☆	225	238	-10.5	19.6

Growing Season Length LINES

blue = 225 days= AJAX
 red = warmer climate, 235 days
 white = cooler climate, 215 days

* Seed Zones are a tool to help people understand the variation in local climate and respect that trees are adapted to those local conditions. Seed from within a zone is generally adapted to the climate within that zone. But when you know the specific location of a planting site or the source of the seed, SeedWhere can use the detailed climate data to make more strategic recommendations for seed and stock movement especially to help plan strategically for climate change effects

** also consider site and soil conditions that species are genetically adapted to.

*** GSL is highly correlated with seed source performance. 12 days is used in S Ontario's generic tree seed zones; contact FGCA for recommendations by species, e.g. 8 days for red oak

Contact B Boysen, FGCA about this map, ~~XXXXXXXX~~ Oct 2011
 Source of Climate Data, CFS, Sault Ste Marie, 1996

Note that coloured areas e.g. green, are not all equal to each other, they are equally different (+ or -) as compared to the point of interest

